

3D Articulation

Using OpenGL

moving parts & hair

Book 3 in the 3D Rendering Series

...just the color figures for those who got the B&W
printed book...

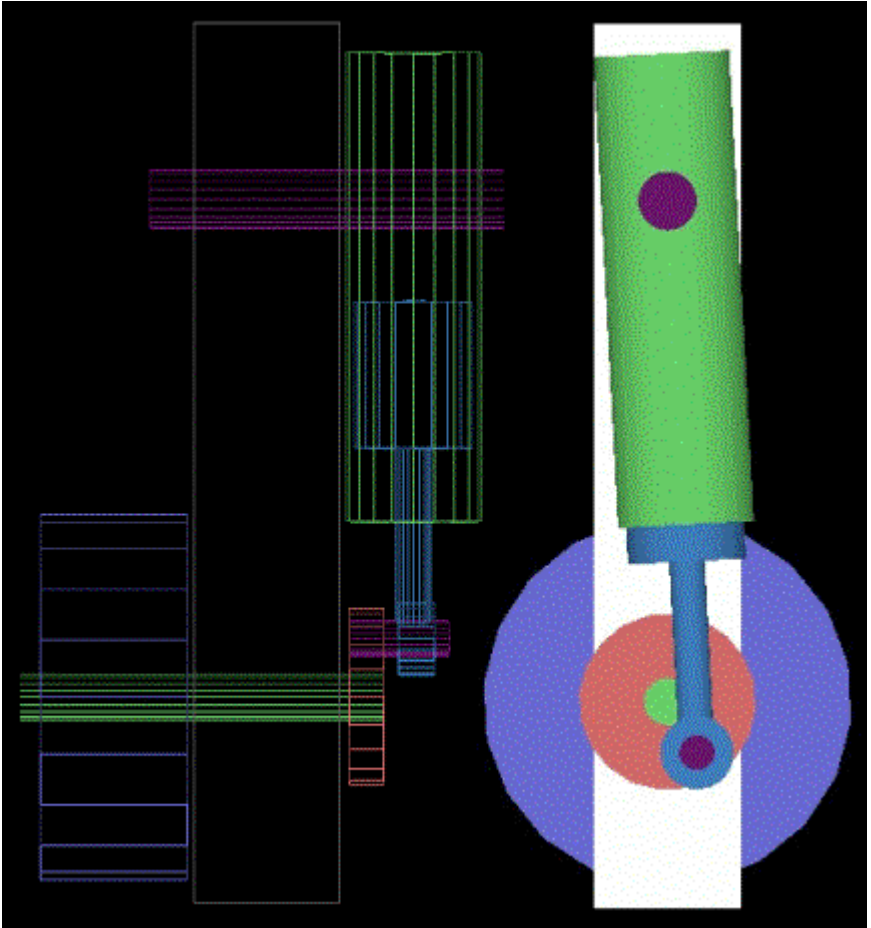
by D. James Benton

Copyright © 2021 by D. James Benton, all rights reserved.

Forward

This is a third course on three-dimensional rendering of models, building on my previous books, *3D Rendering in Windows* and *3D Models in Motion*. In this text we will cover spatial manipulation of objects in order to create the appearance of specific articulation. We also cover finer details, including hair or fur. The Windows® operating system and OpenGL® rendering engine will be our platform, but the same principles apply equally well to other environments. We assume the reader is familiar with C and programming for the Windows® operating system and will not dwell on those details. Many references are available on these foundational subjects, including my book, *Version Independent Programming*. As in that text, we require that all code function properly on any version and configuration of Windows®. All of the software and associated files described herein is available free online.

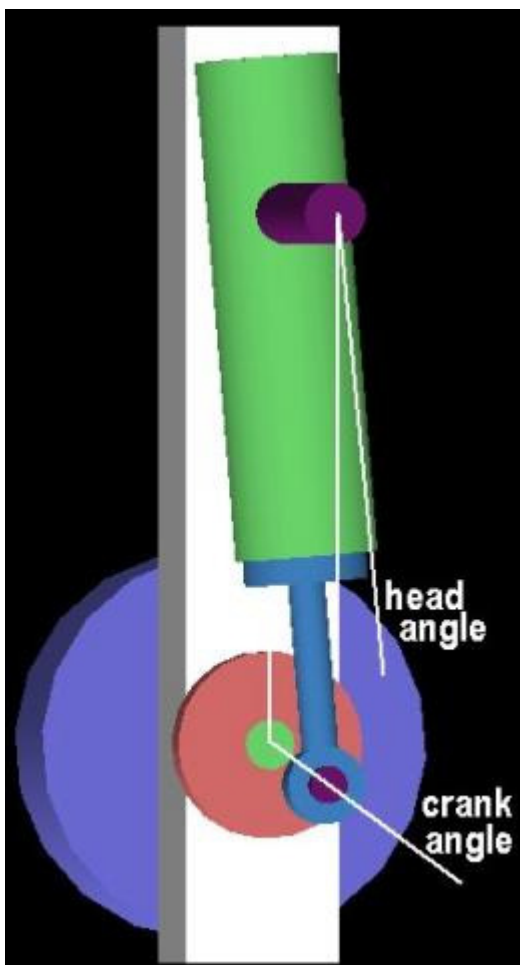
*All of the examples contained in this book,
(as well as a lot of free programs) are available at...*
<http://www.dudleybenton.altervista.org/software/index.html>

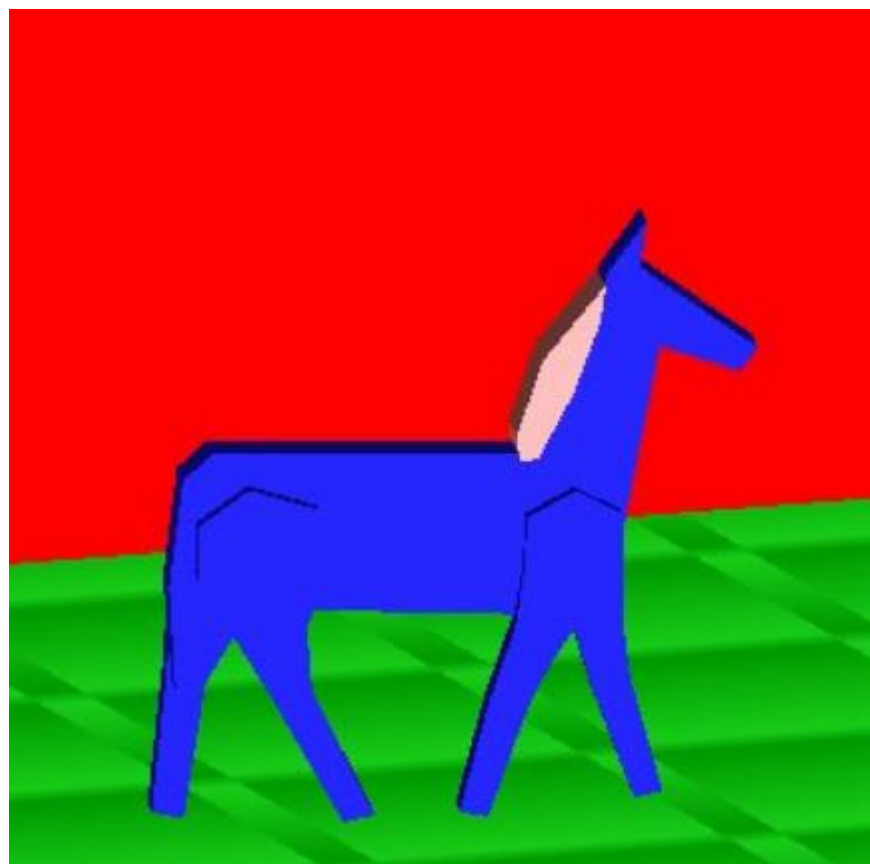


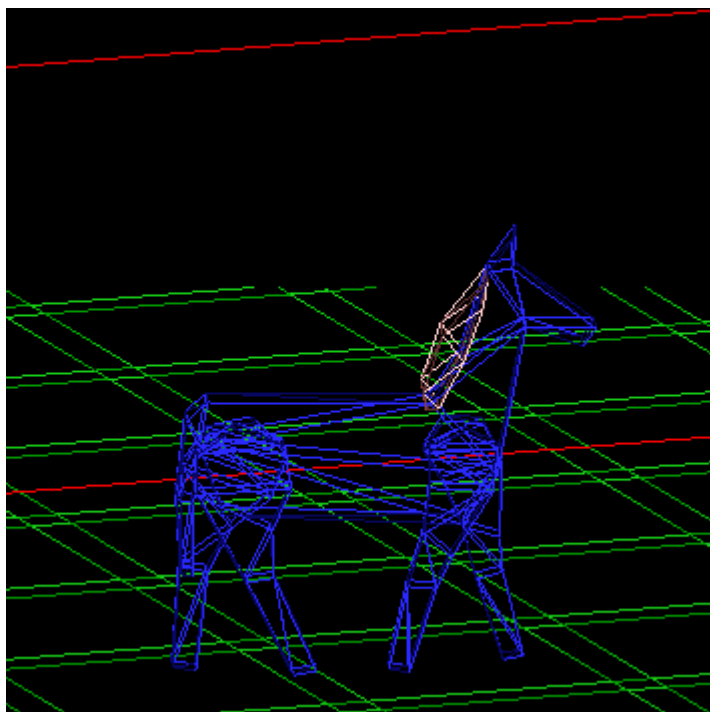
based on the work of Troy Robinette

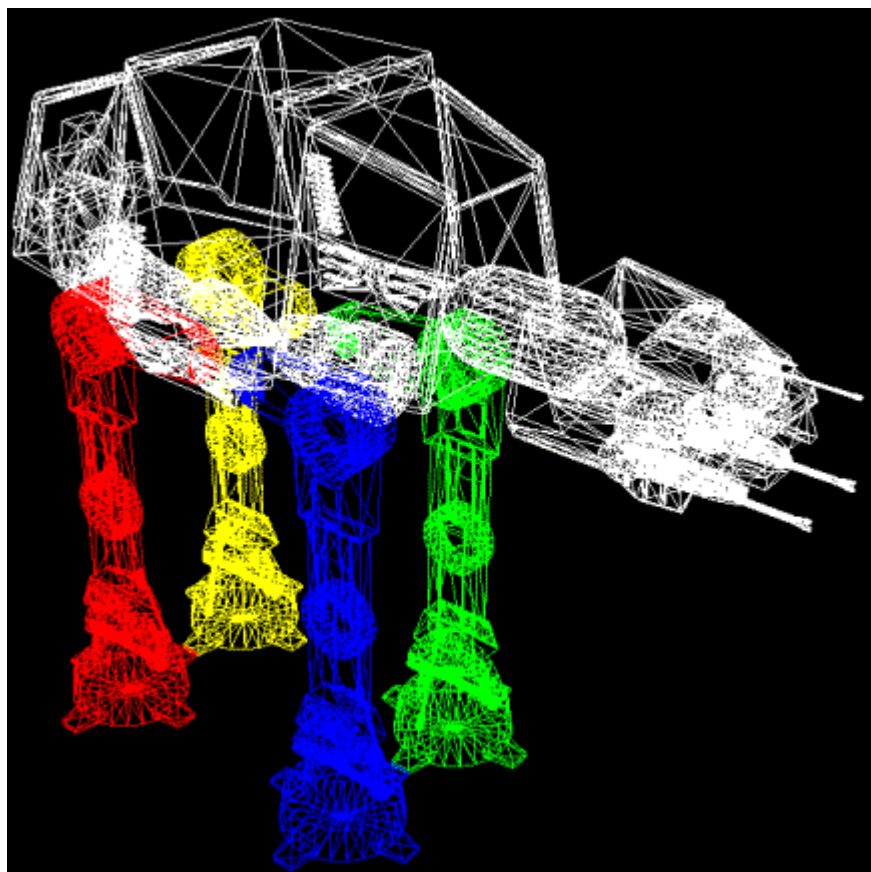


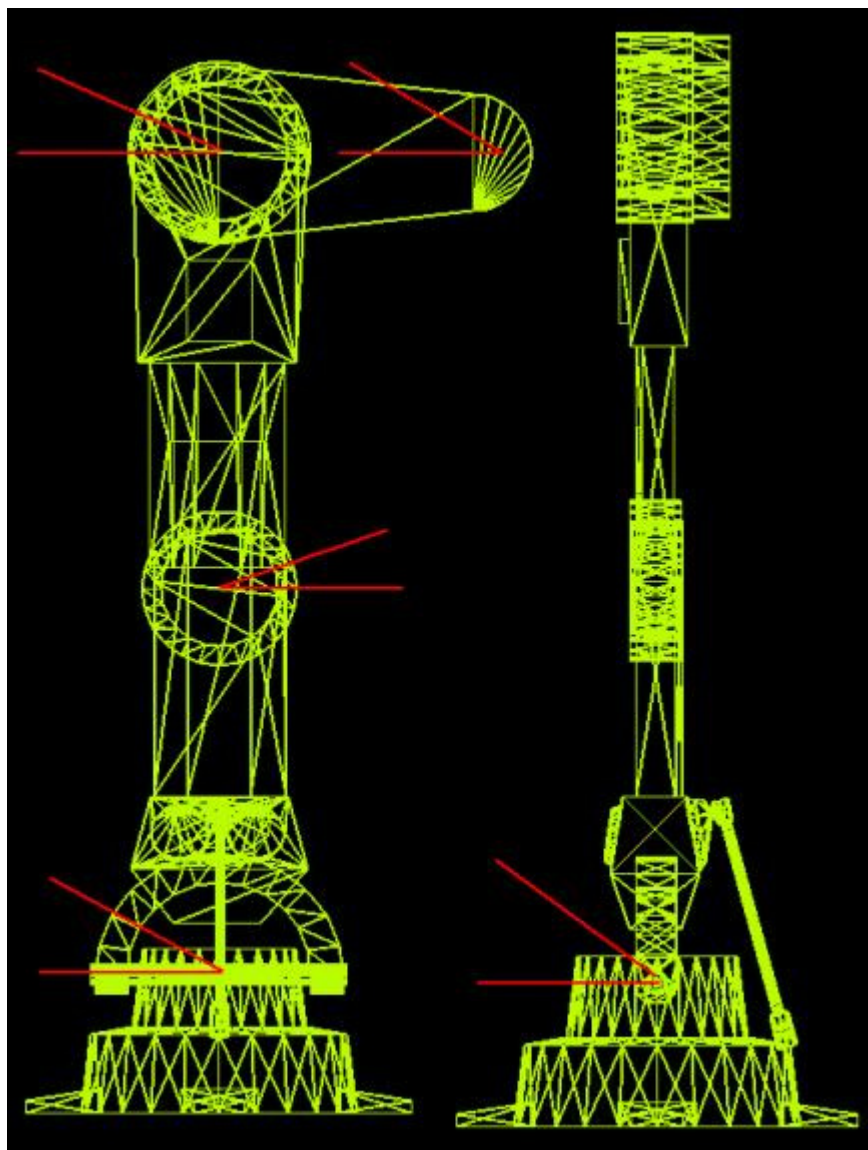
Figure 2. Skeleton (3D Model by Thomas Baier)

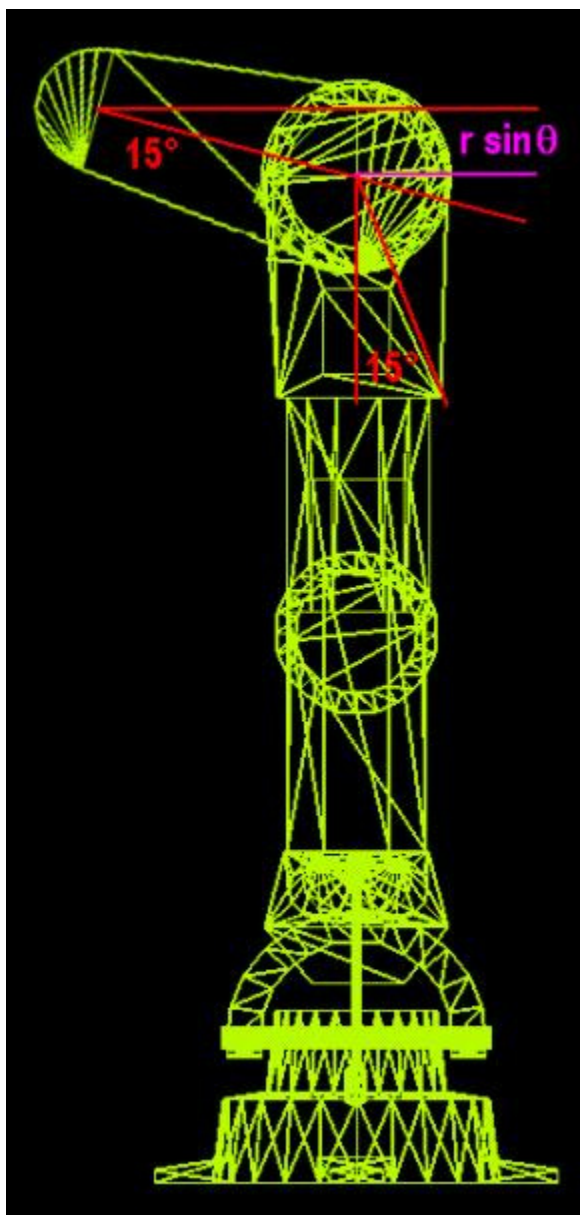


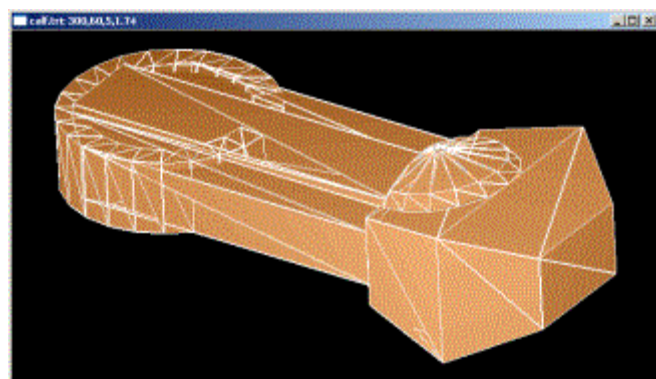
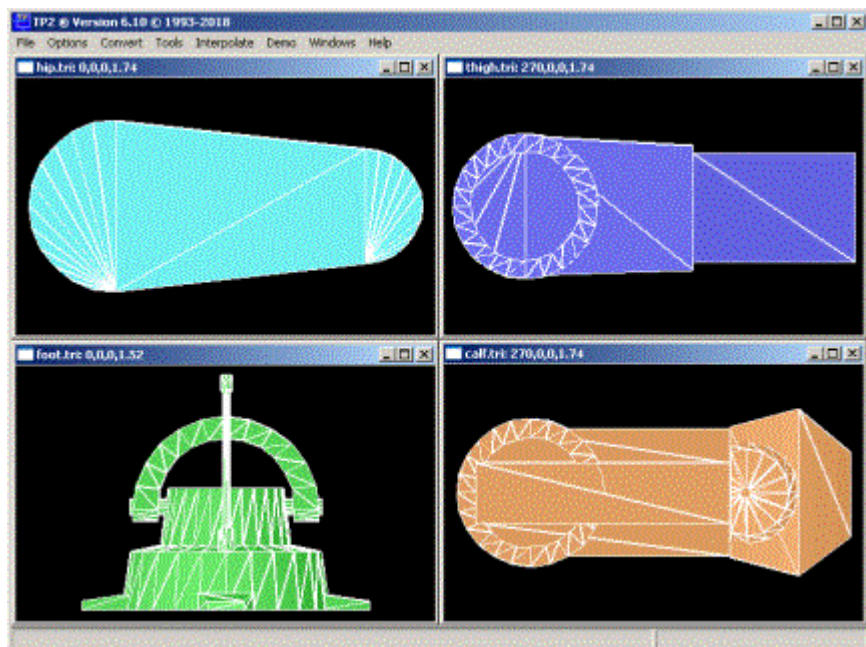


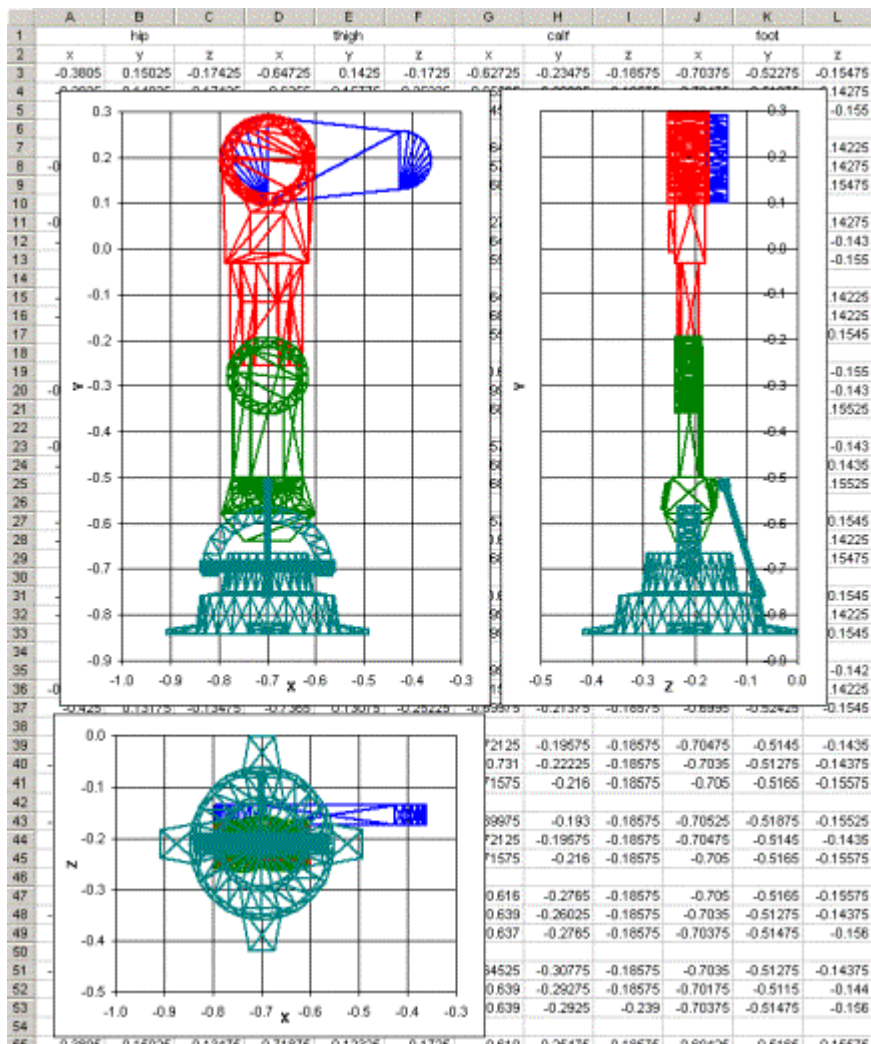


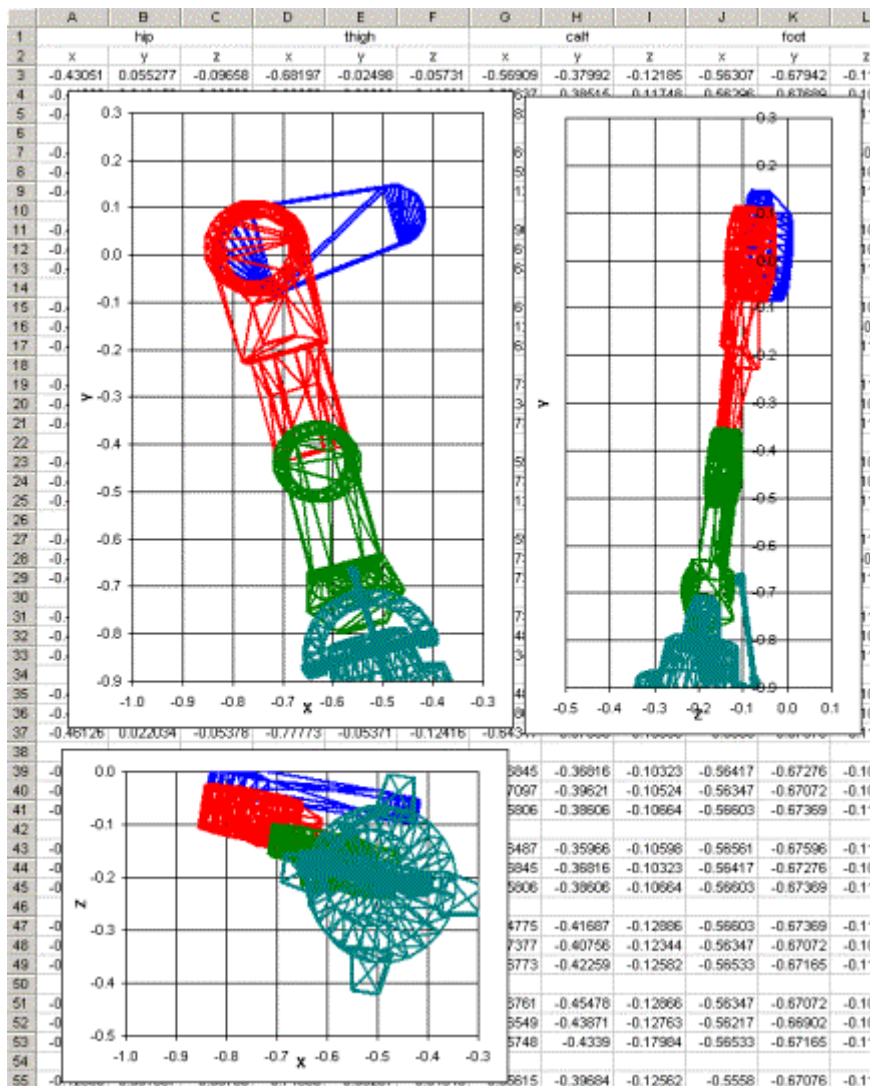


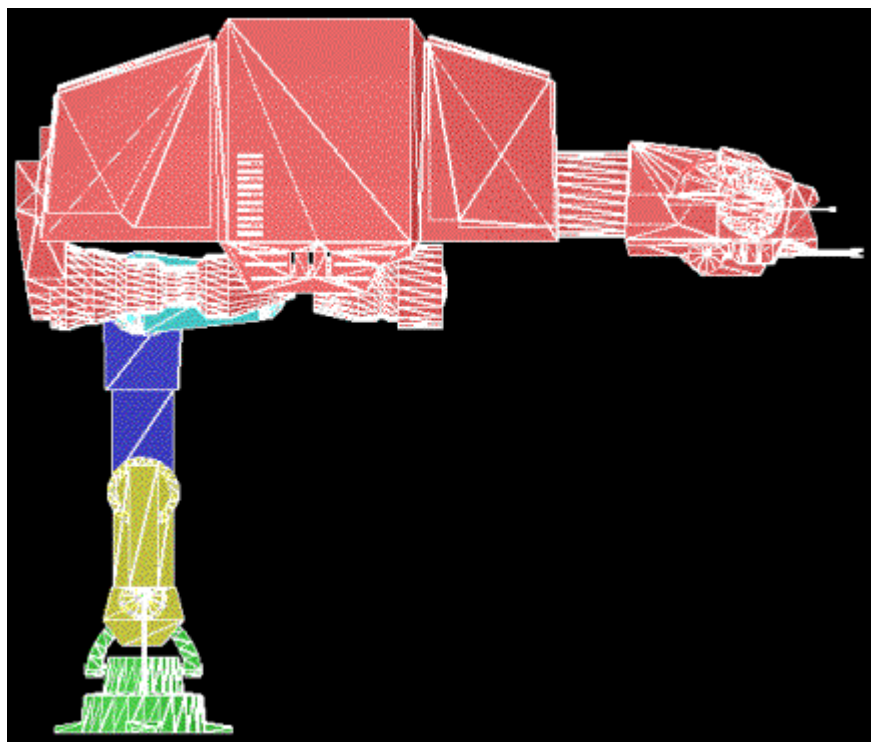


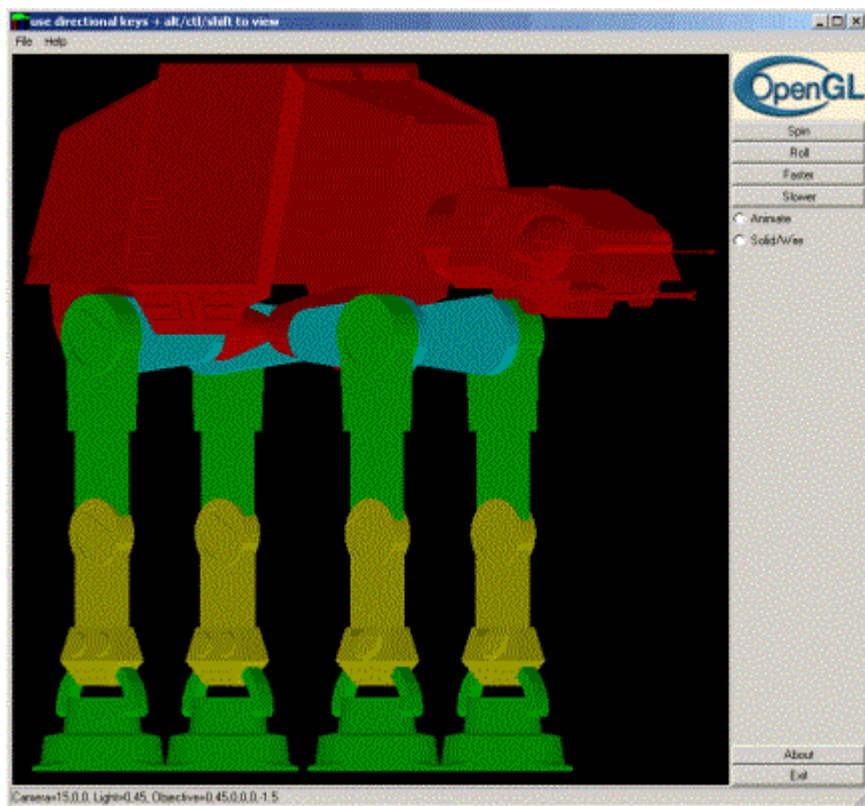


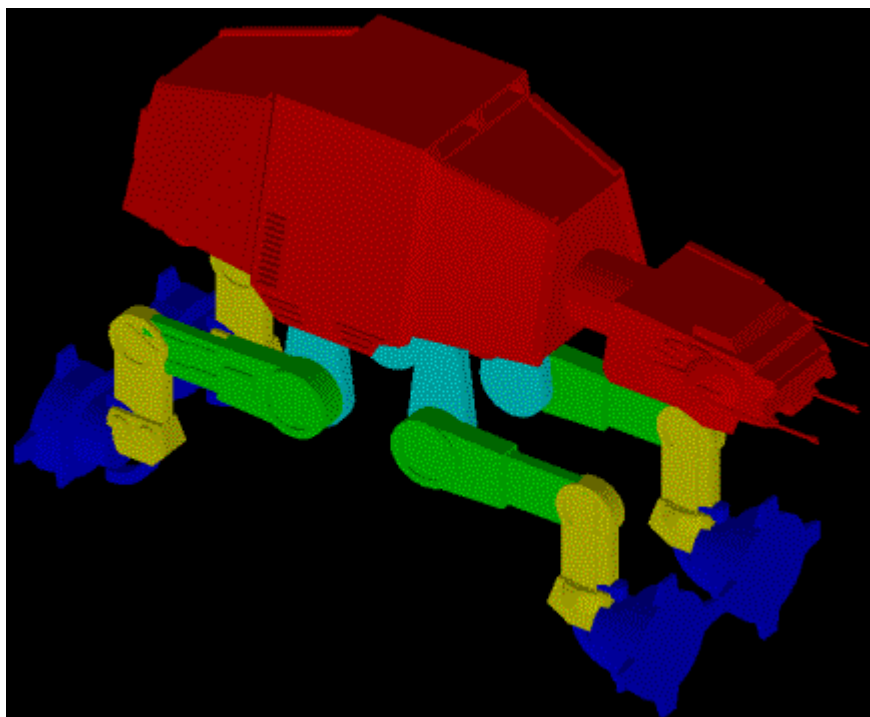
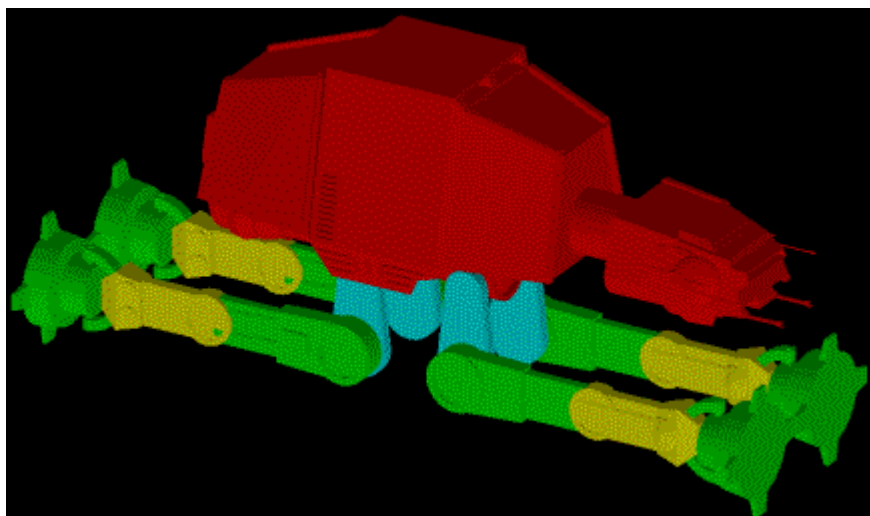


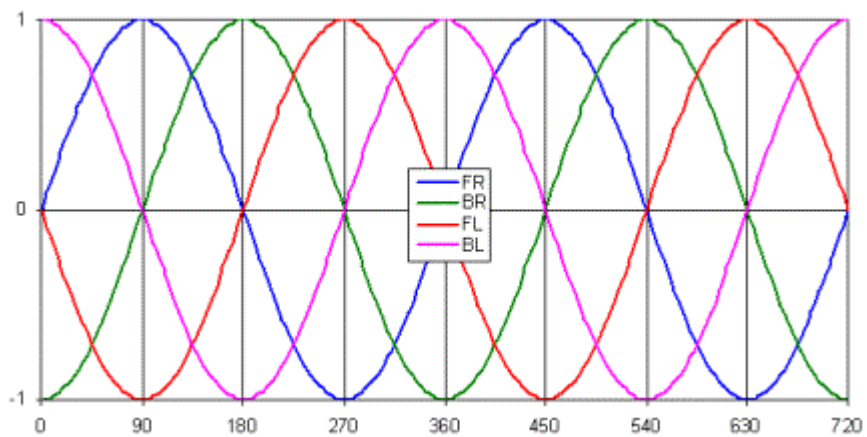




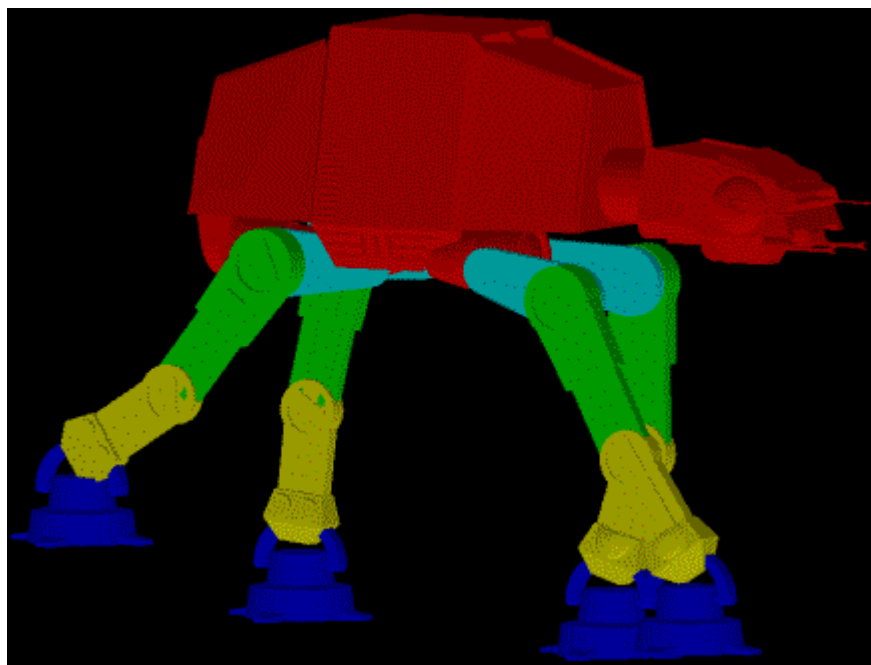


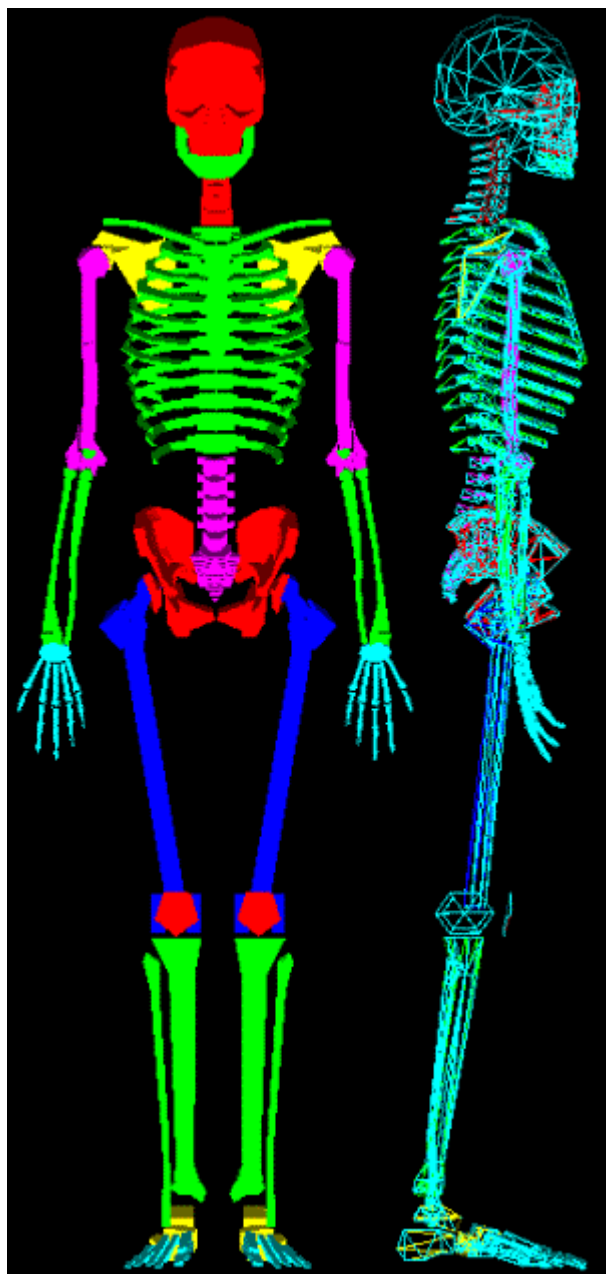




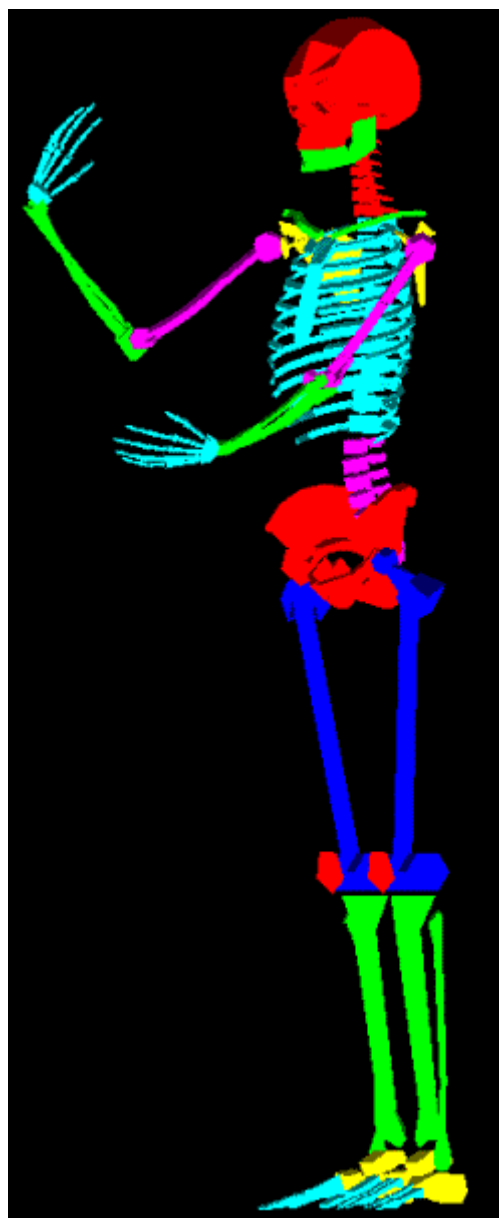


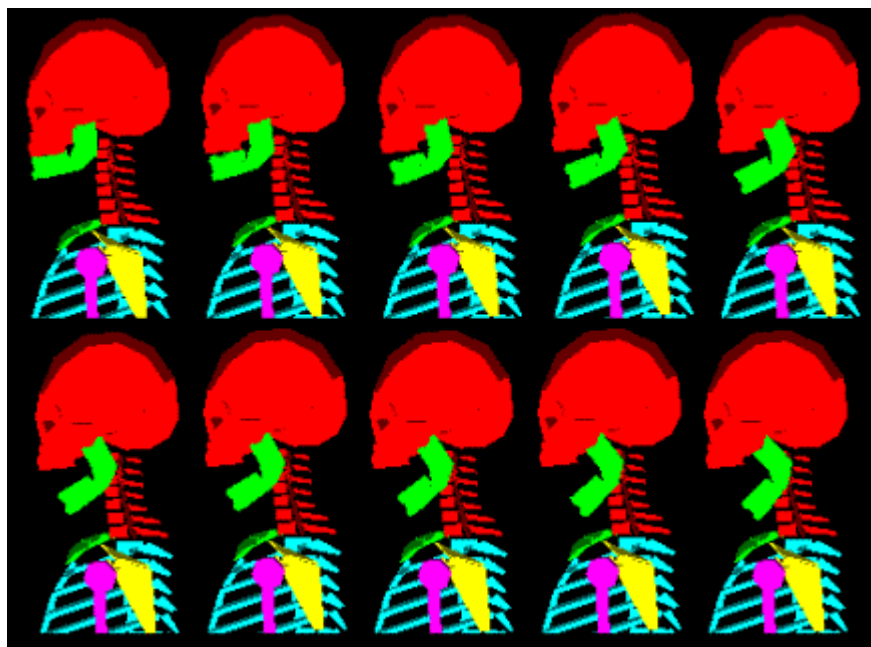


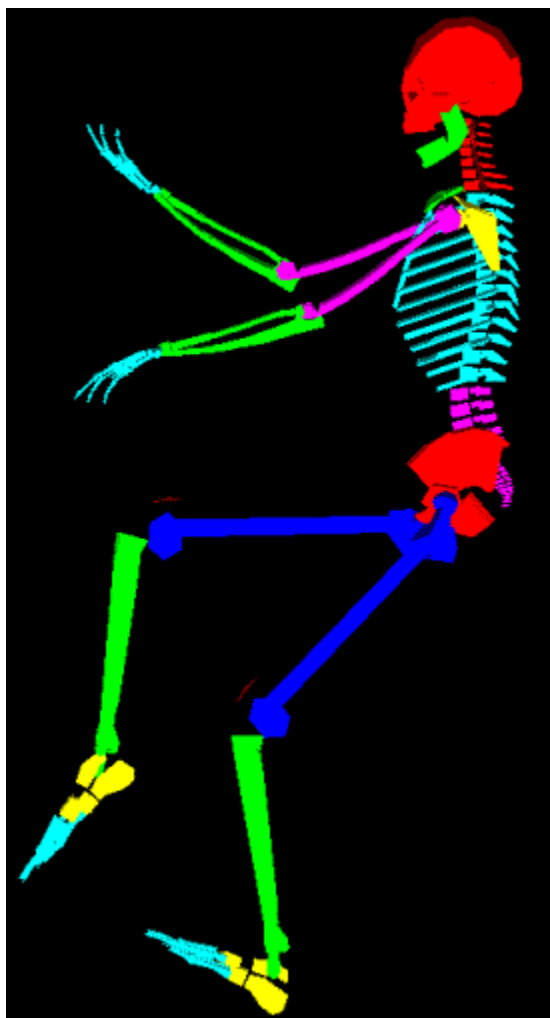


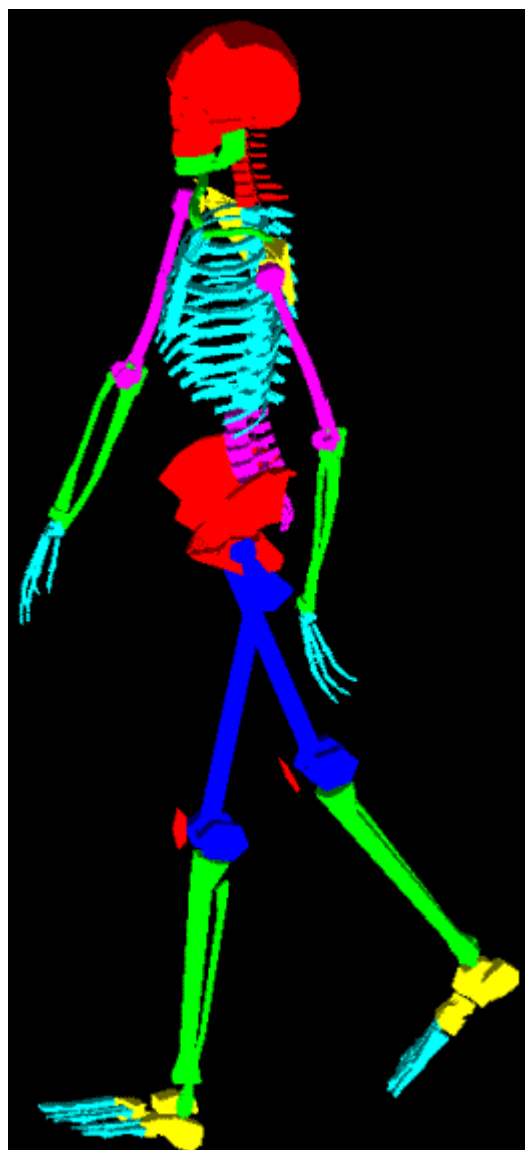


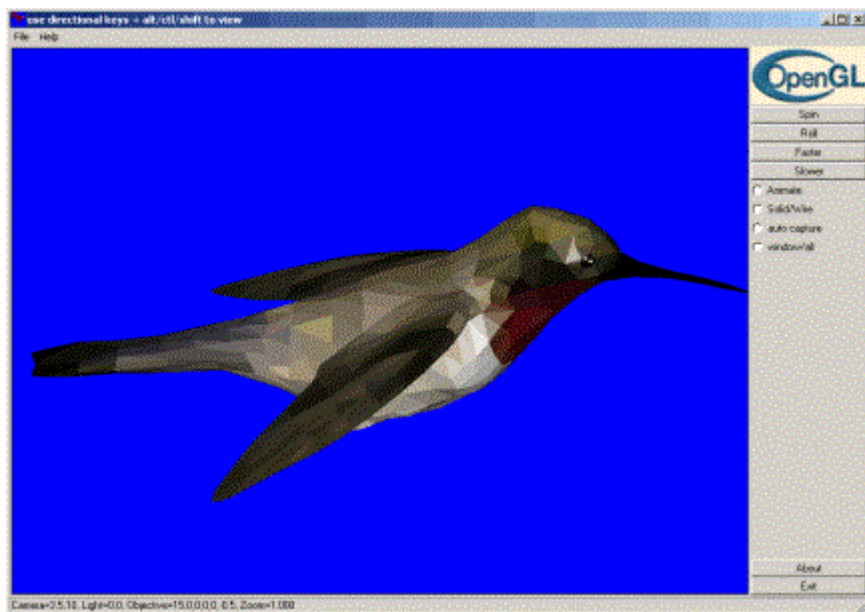


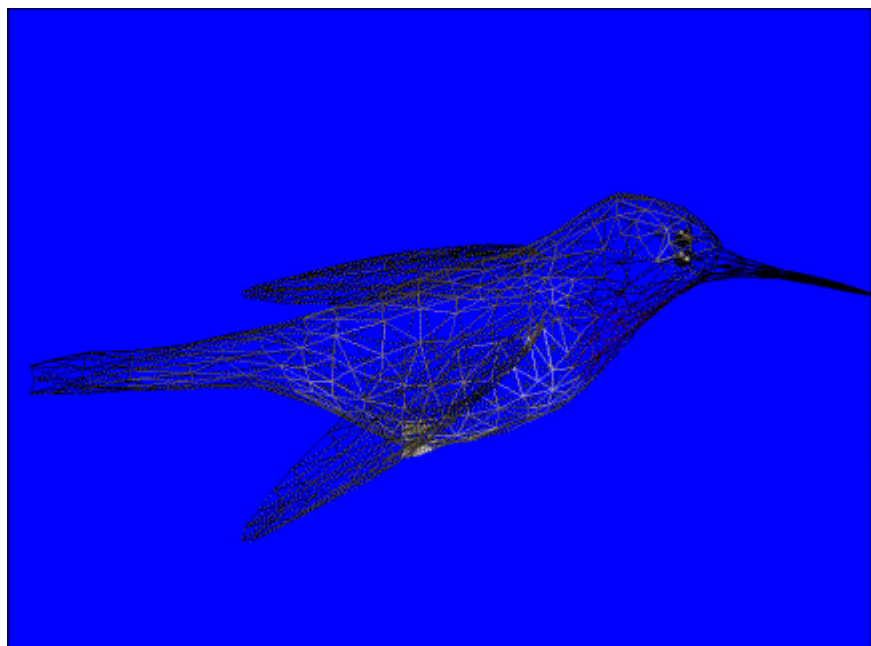












X	Y	Z
0.005838	0.001083	-0.01022
0.008764	0.003345	-0.01081
0.008883	0.001366	-0.00957

0.008764	0.003345	-0.01081
0.010443	0.002267	-0.00972
0.008883	0.001366	-0.00957

0.008764	0.003345	-0.01081
0.010253	0.004064	-0.01099
0.010443	0.002267	-0.00972

0.010253	0.004064	-0.01099
0.012027	0.003089	-0.00909
0.010443	0.002267	-0.00972

0.010611	0.004983	-0.01085
0.012027	0.003089	-0.00909
0.010253	0.004064	-0.01099

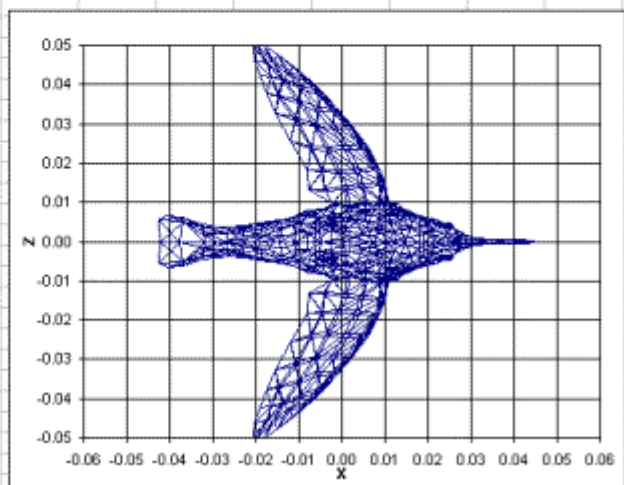
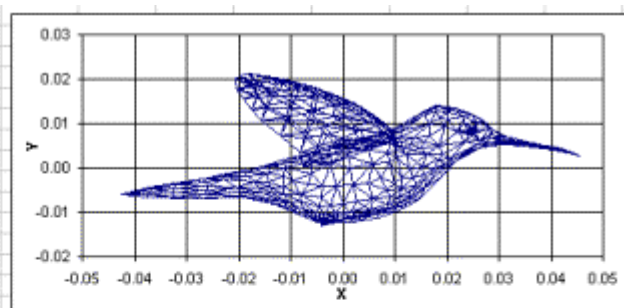
0.010611	0.004983	-0.01085
0.011404	0.004693	-0.00866
0.012027	0.003089	-0.00909

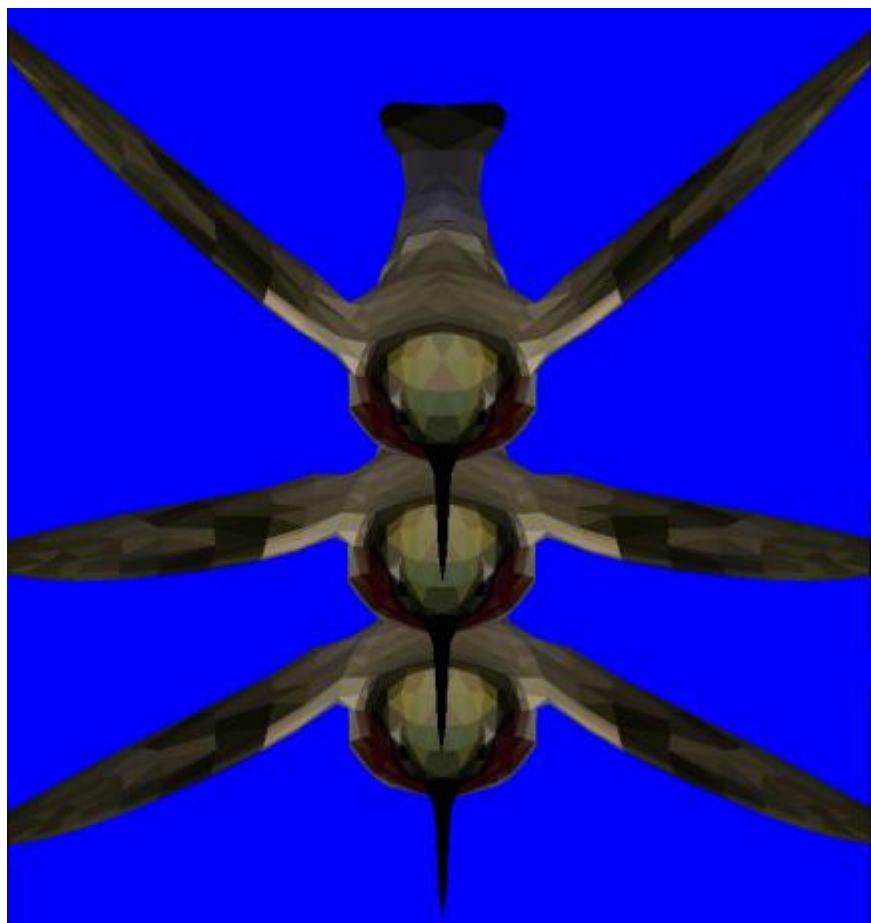
0.010611	0.004983	-0.01085
0.008933	0.005485	-0.01032
0.011404	0.004693	-0.00866

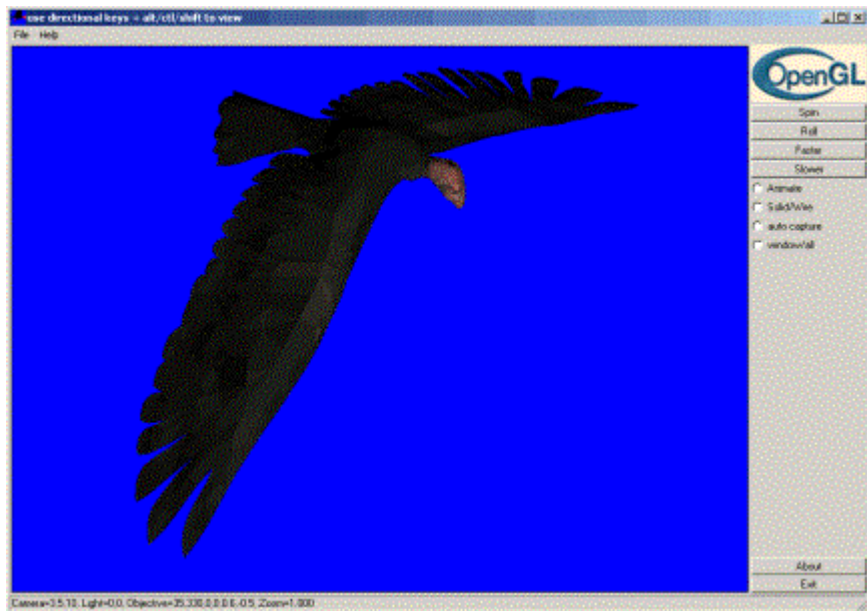
0.008883	0.001366	-0.00957
0.007447	-0.00212	-0.00947
0.005838	0.001083	-0.01022

-0.00613	-0.00136	-0.00692
-0.00648	-0.00382	-0.00753
-0.00941	-0.00287	-0.00687

-0.00613	-0.00136	-0.00692
-0.00389	-0.00415	-0.00682
-0.00648	-0.00382	-0.00753



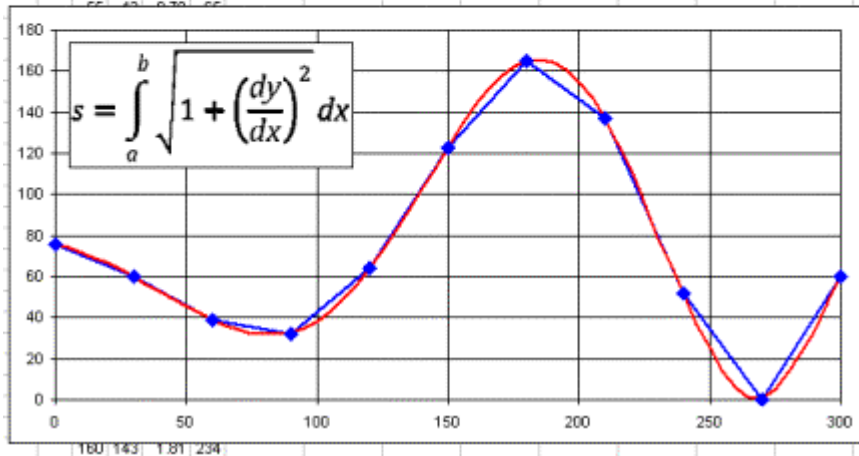


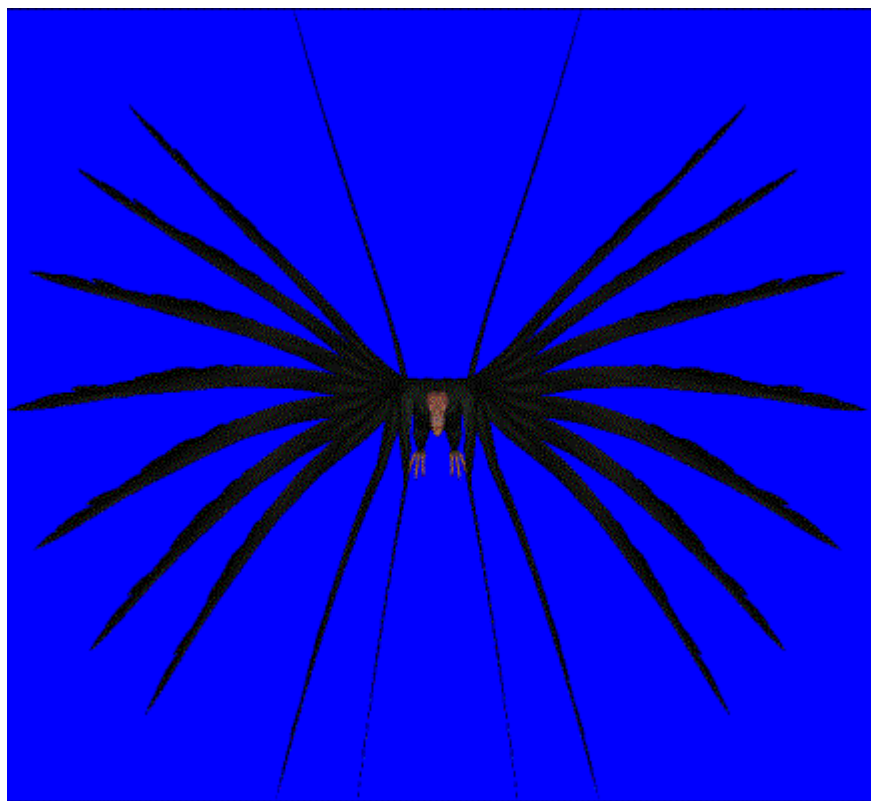


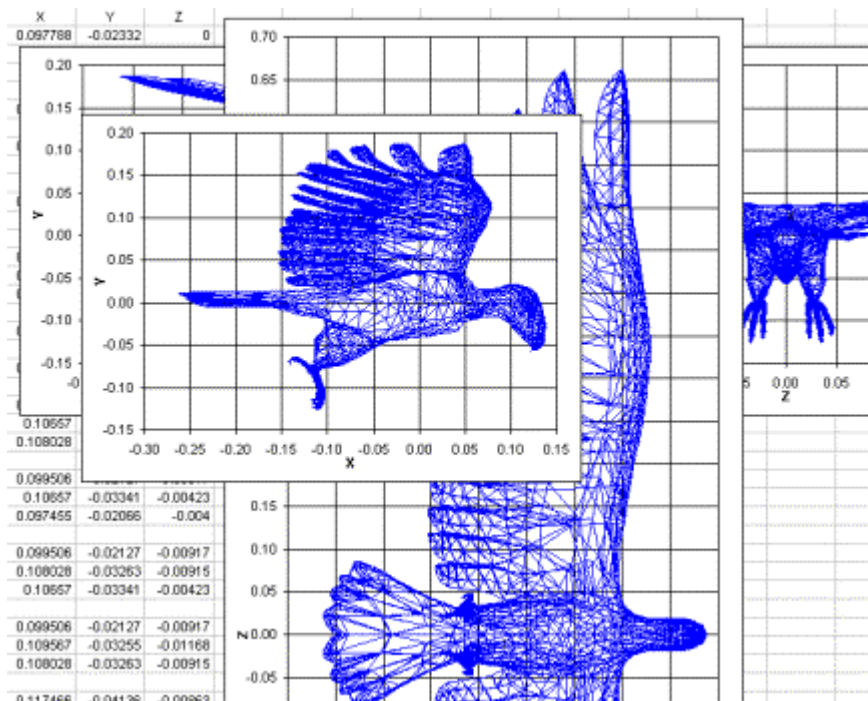
Arc Length Calculus

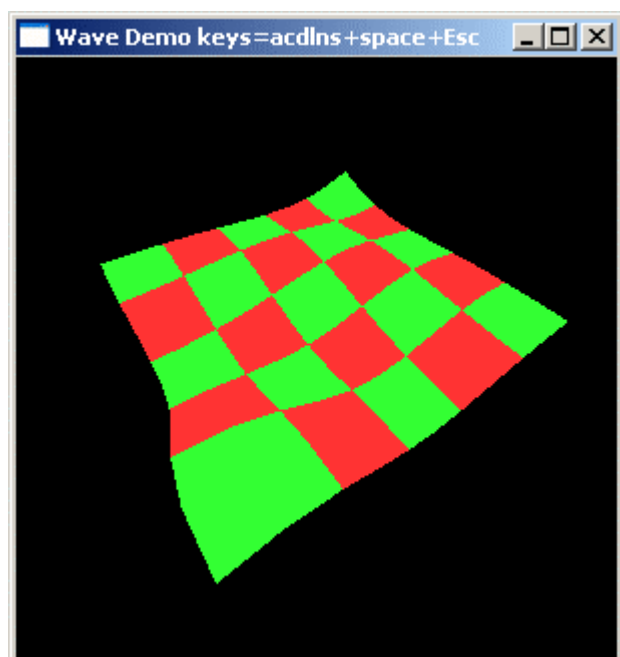
typical curve

discrete		smooth			
x	y	x	y	dy/dx	s
0	76	0	76	-0.40	0
30	60	5	74	-0.45	5
60	39	10	72	-0.50	11
90	32	15	69	-0.50	17
120	64	20	67	-0.58	22
150	123	25	63	-0.68	28
180	165	30	60	-0.70	34
210	137	35	56	-0.70	40
240	52	40	53	-0.70	46
270	0	45	49	-0.70	53
300	60	50	46	-0.70	59



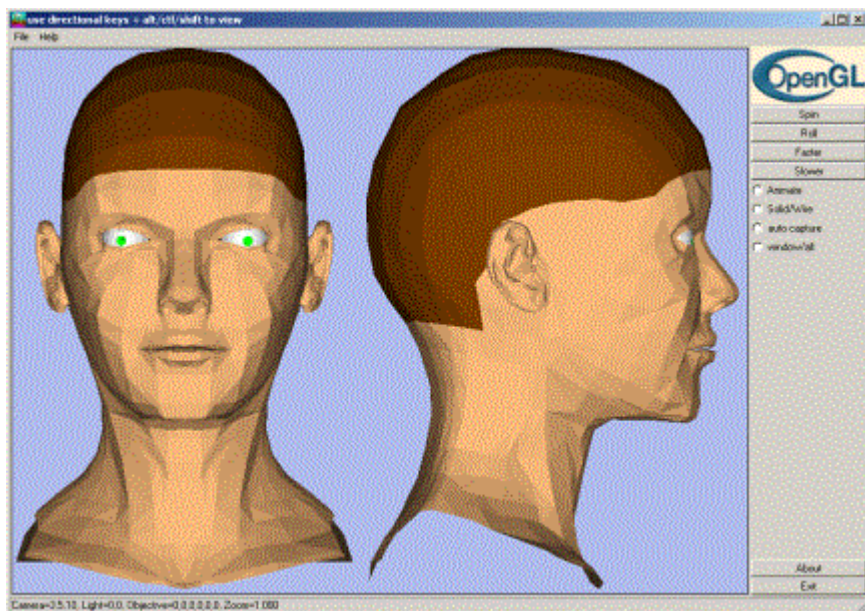
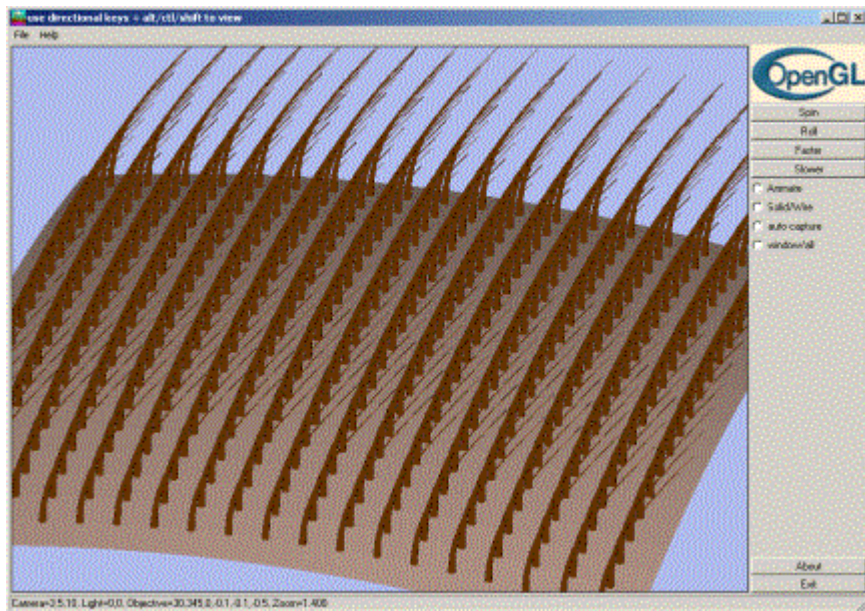


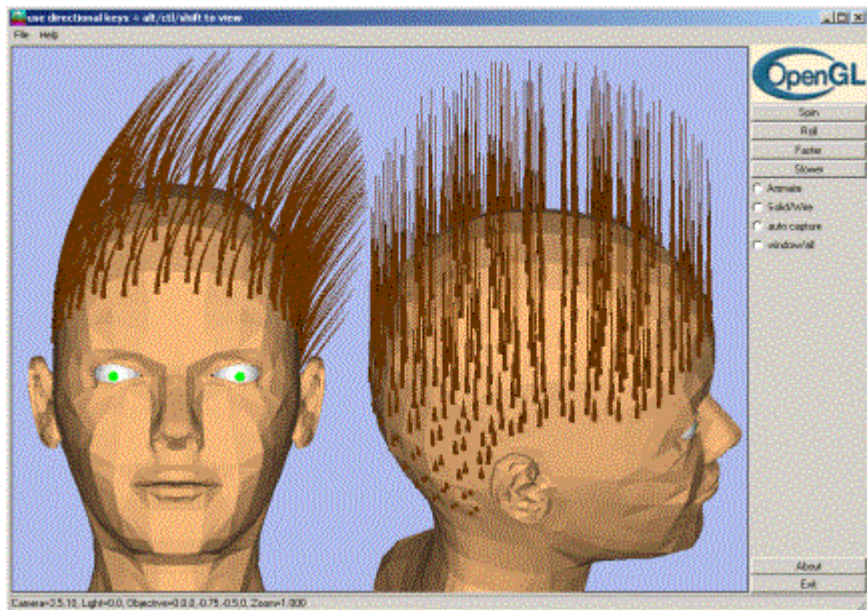


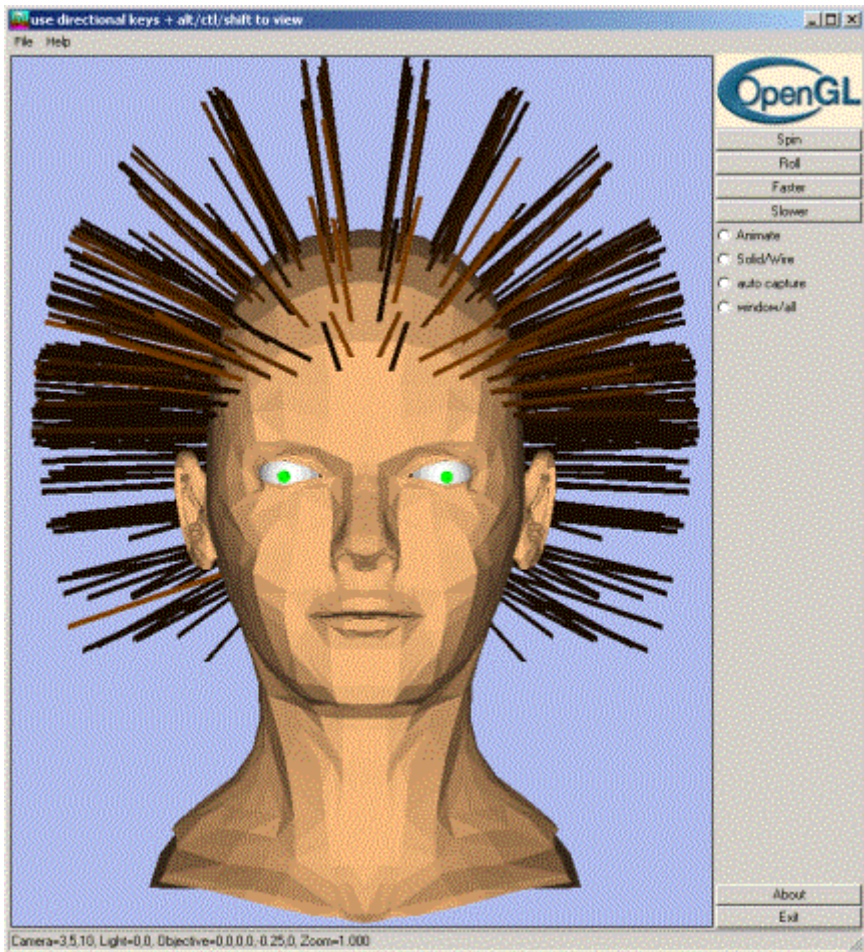


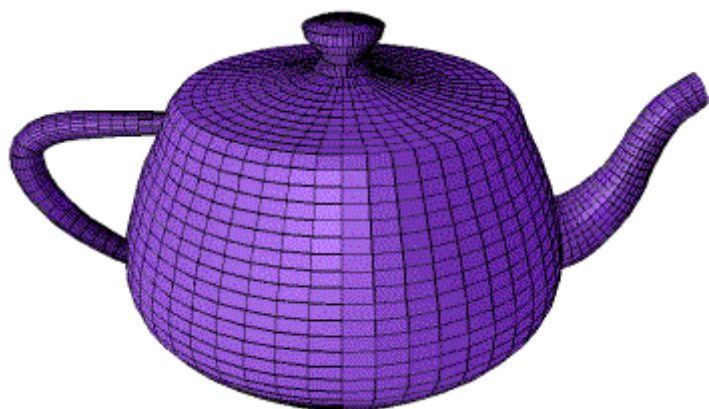
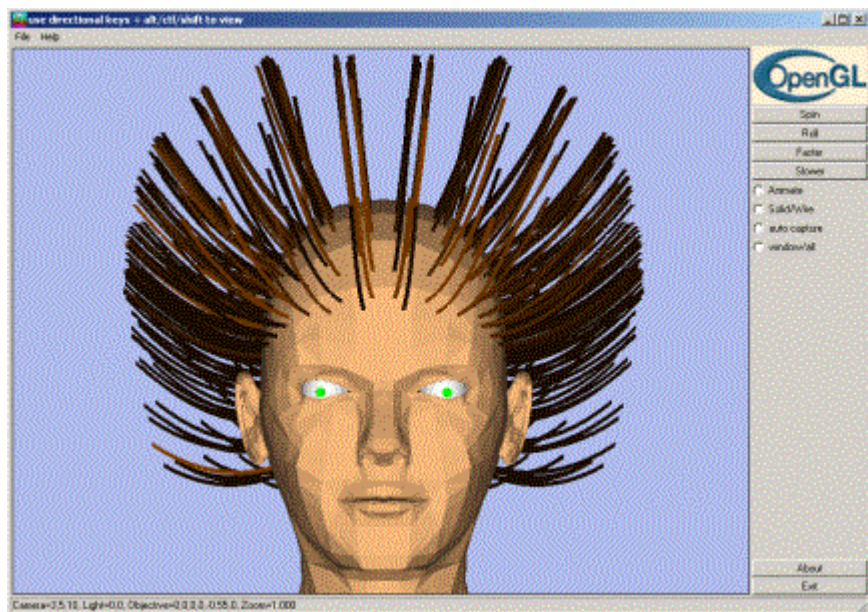


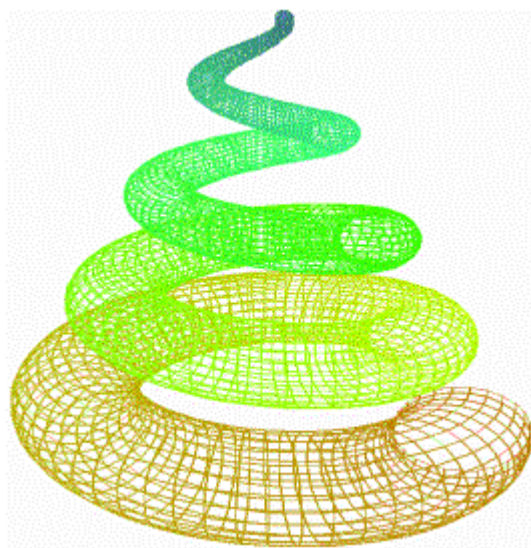
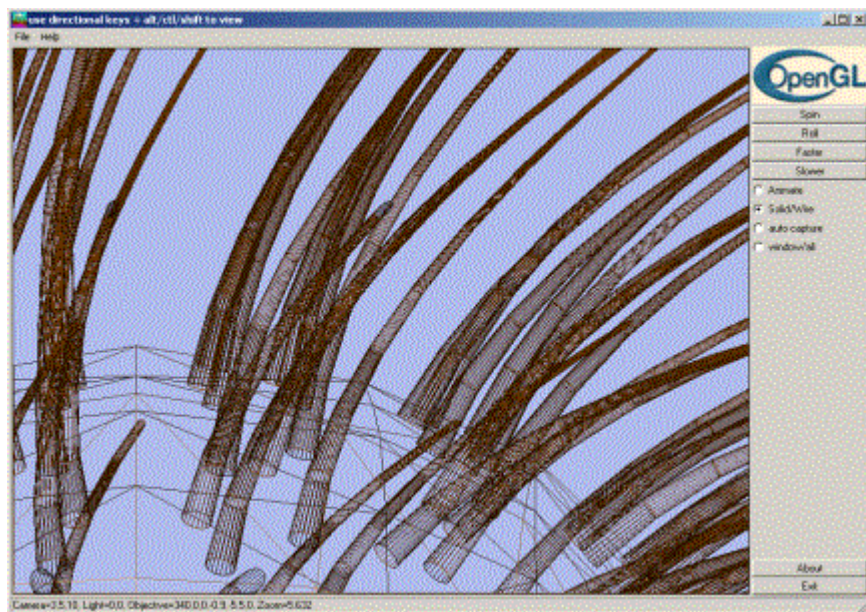


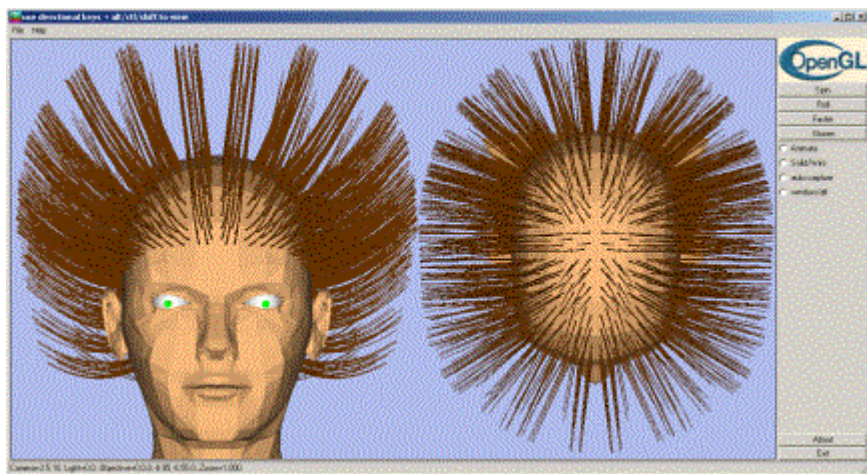
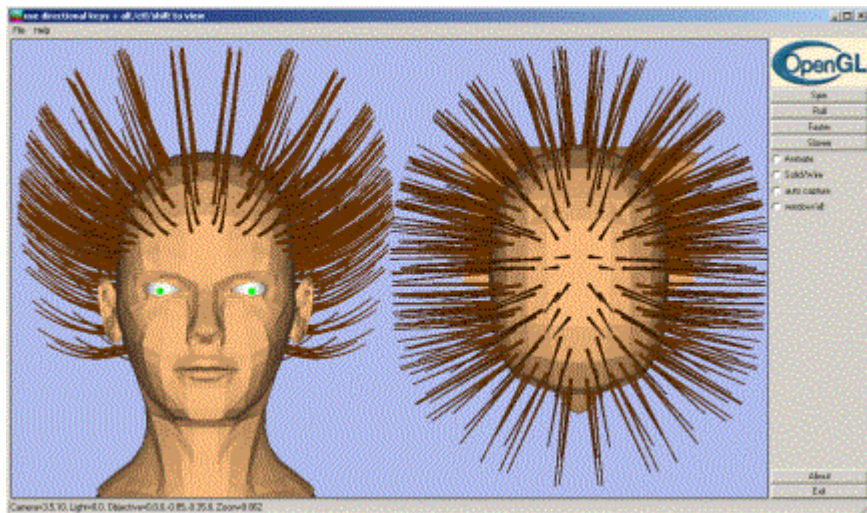


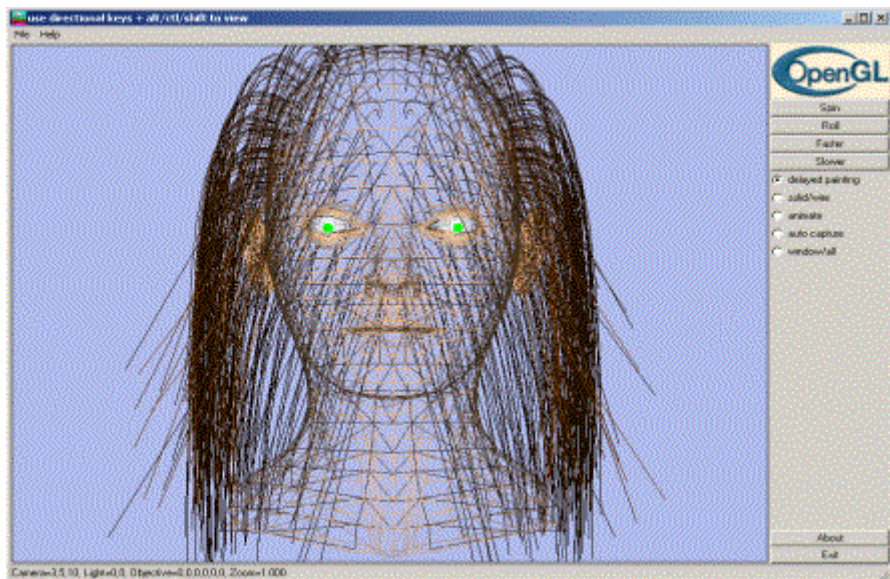
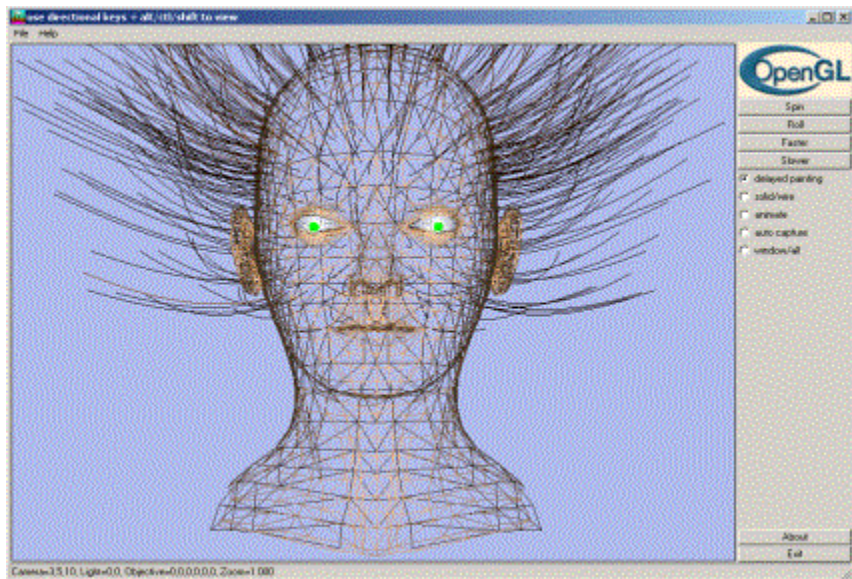


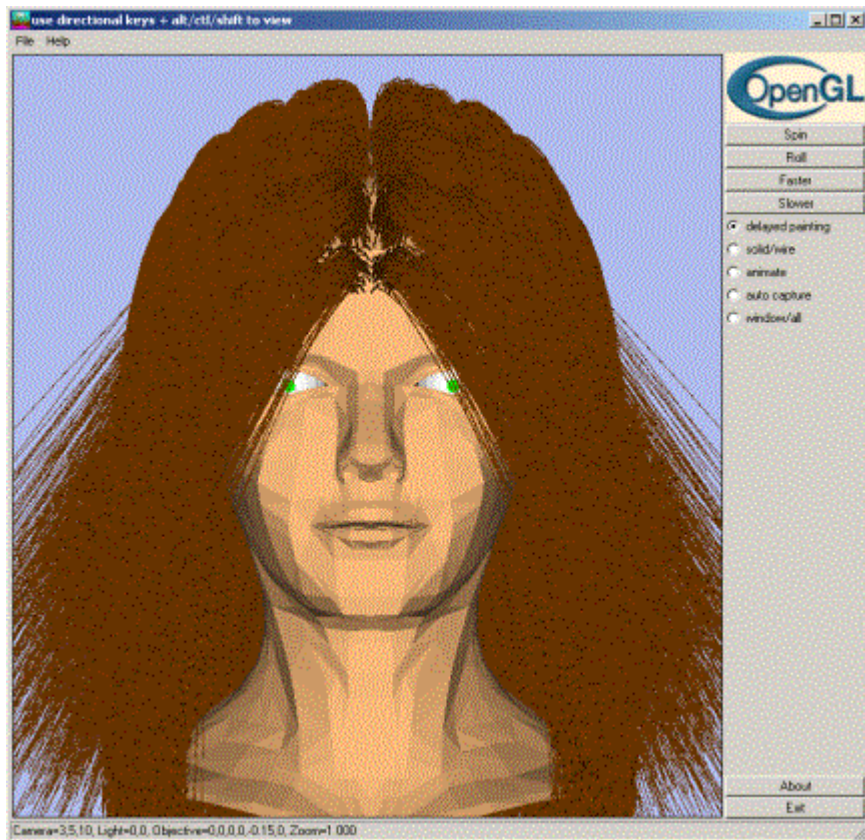


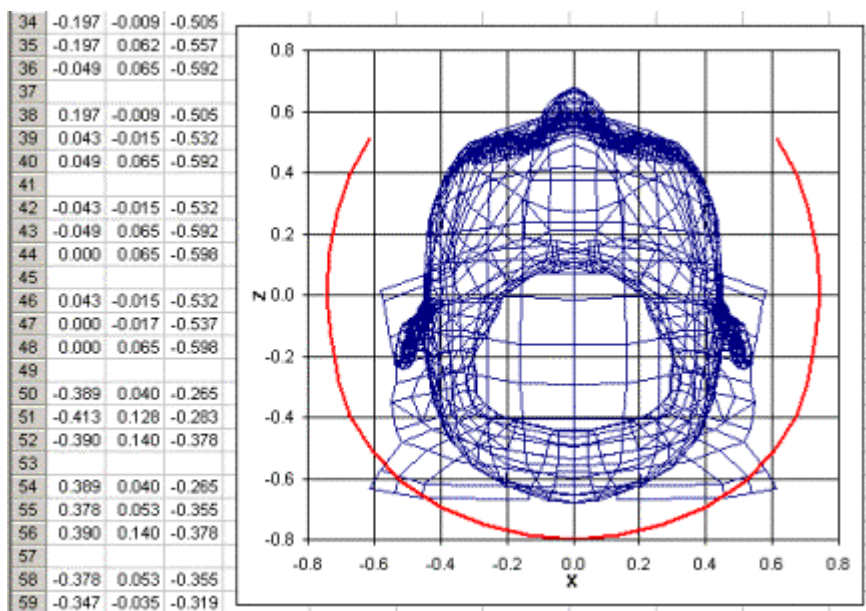
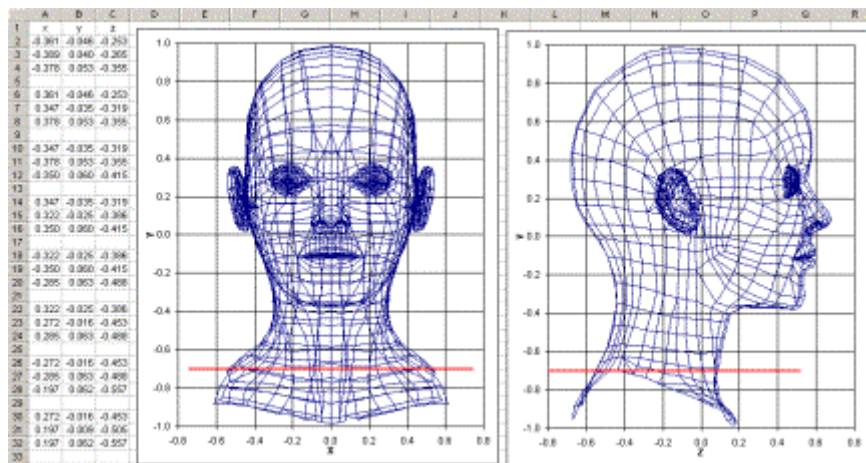


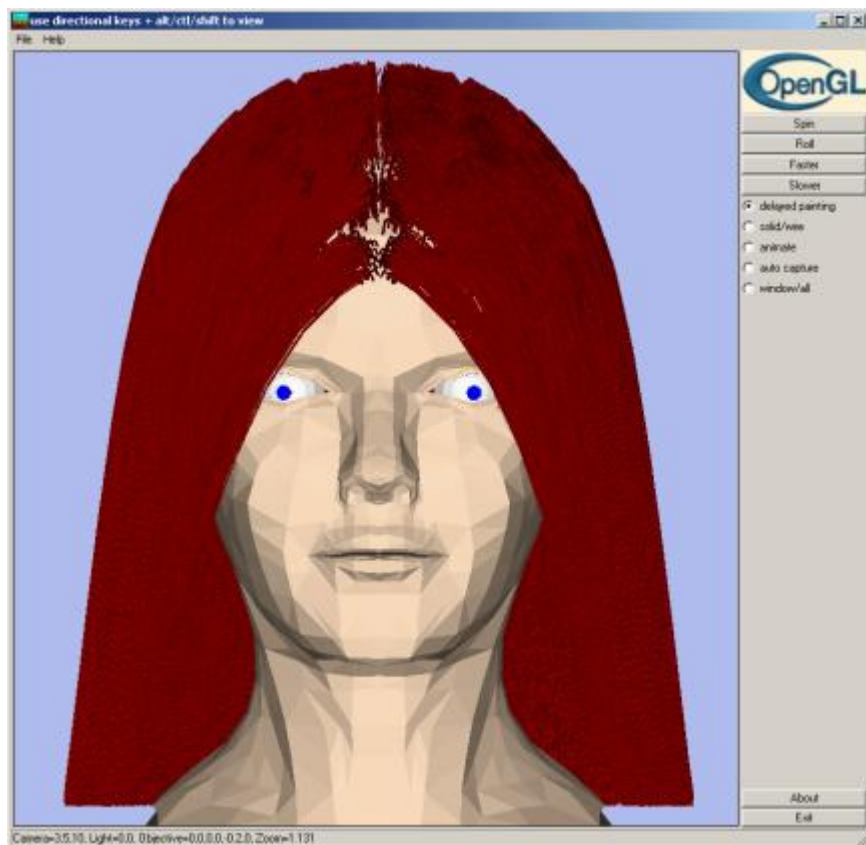






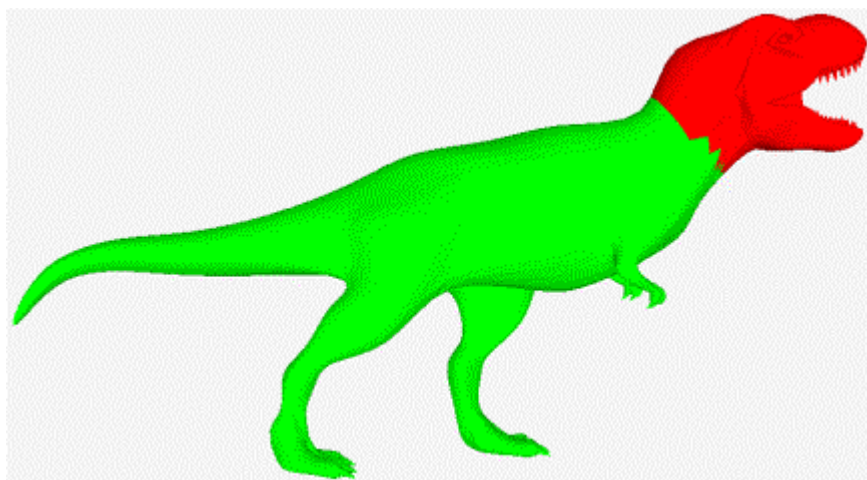
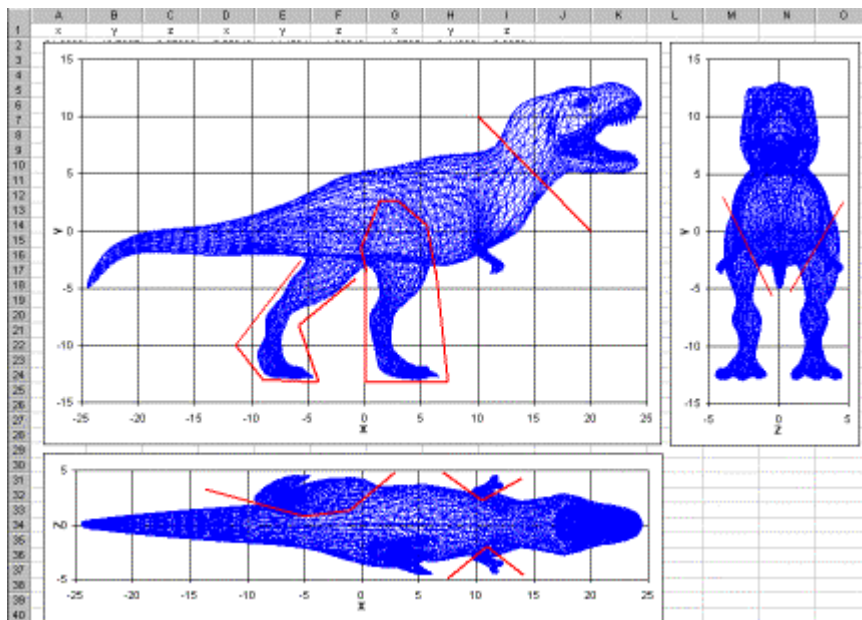


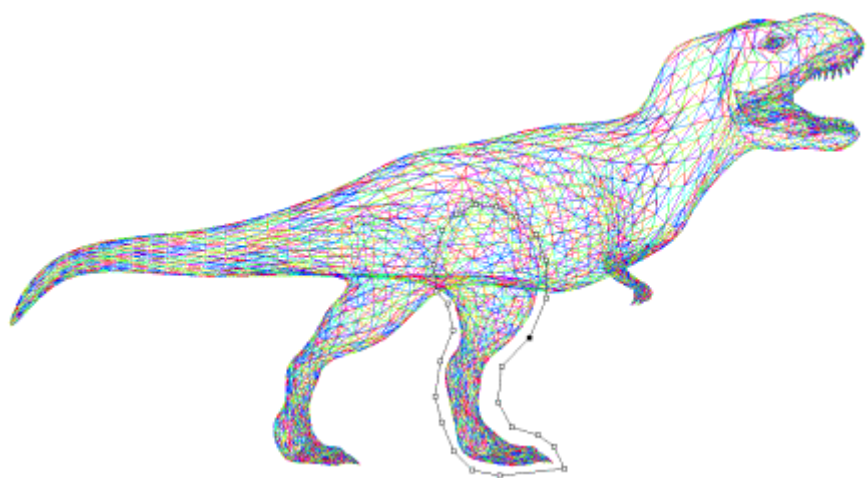
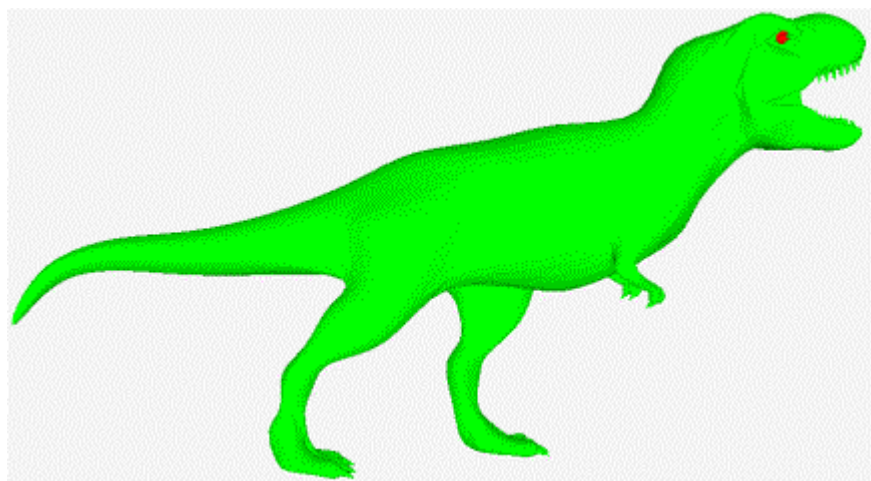












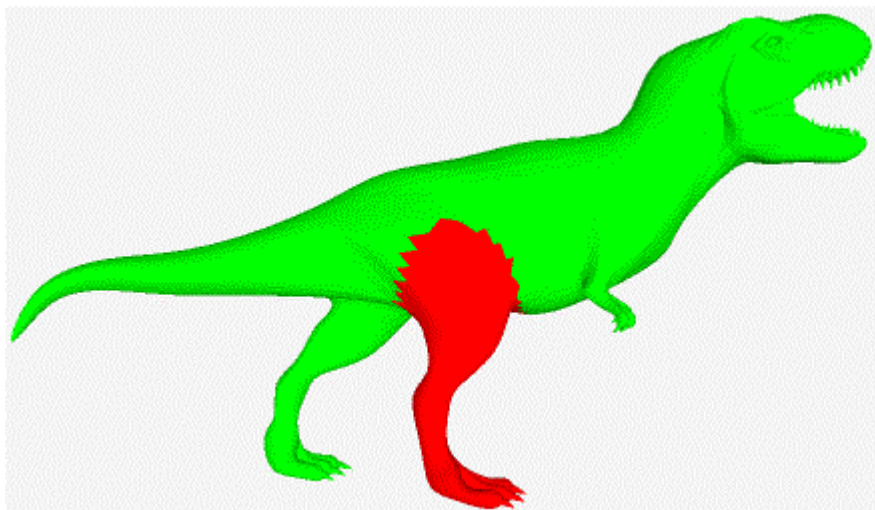


Figure 69. Leg Polygon Selection